

WOMEN TechEU

Guidelines for applicants: Eligibility Strand

Author(s):	Marta Fernández (Sploro)
Editor(s):	Virginia Gómez (Sploro) Miguel García (Sploro) Maja Horvat (Sploro) Angele Giuliano (AcrossLimits) Rebecca Zammit (AcrossLimits) Clare McGee (AwakenHub) Maria McKeever (AwakenHub)
Responsible Organisation:	Sploro
Version-Status:	V2.0
Dissemination level:	Public

Disclaimer: Funded by the European Union. Views and opinions expressed are however those of the author(s) only and do not necessarily reflect those of the European Union or the European Innovation Council and SMEs Executive Agency (EISMEA). Neither the European Union nor the granting authority can be held responsible for them.

OPENING: 1st June 2026

CUT-OFF: Weekly cut-offs every Tuesday at 17:00 CE(S)T (Brussels time) until 13th July 2027 at 17:00 CEST*. First cut-off 30 June 2026 at 17:00 CEST.

** The cut-off deadlines for submission are as stated in this Guidelines document. Please note that the platform for submission's time depends on the user's configured timezone and may or may not coincide with the correct time (this depends on the user, not the platform for submission). Any discrepancies in system time will not be grounds for deadline extension.*

Relevant Links:

Application platform: [LINK](#)

Women TechEU 2 EIC website: <https://womentecheurope.eu/>

FAQ Document: [LINK](#)

Table of contents

List of acronyms	4
1. Introduction	5
1.1. About Women TechEU 2 EIC project	5
1.2. Objectives and ambition	5
2. Definitions	7
3. Eligibility Strand	9
3.1. Application period	9
3.2. Evaluation period	9
3.3. Eligibility Letter reception and next steps	10
4. Who can apply? The eligibility criteria	10
5. How to apply? The Application Process	14
5.1. Overall process	14
5.2. Language	16
5.3. Application preparation	16
6. Verification process	17
6.1. Eligibility criteria	17
7. Appeals procedure	19
8. Helpdesk support channel	20
8.1. Questions during submission process	20
8.2. Technical issues	21
8.3. Re-submission of submitted applications	22
9. Beneficiaries' Responsibilities	22
9.1. Absence of conflict of interest	23
9.2. Data protection and confidentiality	23

List of acronyms

Acronym	Description
AI	Artificial Intelligence
CEO	Chief Executive Officer
CE(S)T	Central European (Summer) Time
CTO	Chief Technology Officer
CSO	Chief Scientific Officer
EC	European Commission
EIC	European Innovation Council
EISMEA	European Innovation Council and SMEs Executive Agency
EU	European Union
GDPR	General Data Protection Regulation
OLAF	European Anti-Fraud Office
SME	Small and medium-sized enterprise
TRL	Technology Readiness Level

Table 1. List of Acronyms

1. Introduction

1.1. About Women TechEU 2 EIC project

The Women TechEU 2 EIC project is on a mission to ignite the potential of women-led early-stage startups in deep tech. 160 talented women entrepreneurs from across the European Union and Horizon Europe associated countries will be receiving direct support. With 75k€ grant (non-diluting finance) and a personalised business development programme, the project will be paving the way for these innovators to shine as leaders in deep tech innovation across Europe.

This project is a continuation of the Women TechEU scheme that was first managed by EISMEA (European Innovation Council and SMEs Executive Agency) from 2021 to 2023 and by another consortium during 2024 - 2026, and it has now become a fully-fledged cascade funding project that is run by an EU-wide consortium made up of different innovation ecosystem players, representatives of women entrepreneurs and also investors.

Over a two-year period, the project will award a total of €12 million in non-dilutive funding through an open call with four competitive cut-off submission deadlines. For each deadline, 40% of the funding will be allocated to startups from widening regions.

Each selected startup will receive tailored support designed to unlock its full potential, including access to a comprehensive menu of business development services and one-to-one mentoring from an expert. The six-month support programme will be co-designed by the entrepreneurs and the programme team, with clearly defined, individualised development KPIs.

This structured support will ensure a smooth and sustained scale-up of each business, while also preparing participants to successfully apply for further funding opportunities such as the EIC Accelerator and Pre-Accelerator programmes.

1.2. Objectives and ambition

The main objective of the project is:

To create a targeted programme of support for women founders and entrepreneurs leading deep tech startups from Europe. This will enable them to grow into tomorrow's tech leaders and to put women at the forefront of deep tech in Europe.

Our ambition is to directly contribute to interconnected, inclusive, and more efficient innovation ecosystems that draw on the existing strengths of European networks to engage new, less well-represented stakeholders and less advanced innovation territories. Women TechEU will leverage its experience and the strengths of existing startup accelerators, Universities and other multiplier organisations around Europe to foster greater long-term inclusivity of women in deep tech.

Women TechEU will **target areas lagging in innovation capacity** (widening areas), to reduce territorial inequalities in accessing to innovation support.

The funding, combined with tailored support services and facilitated investor connections, will strengthen cross-border networks and interregional collaboration, particularly for startups from less-connected ecosystems. This approach will enhance the capacity of regional innovation valleys to create, reshore, and renew European value chains in line with the green and digital transition.

In parallel, it will deepen and expand collaboration between innovation ecosystems across Europe and globally.

To engage with these promising early-stage, women-led, deep tech startups, Women TechEU will open a competitive call divided into two strands (Eligibility and Full Proposal) to select and empower them.

2. Definitions

For the purposes of this call, the following definitions shall apply:

- **Autonomous enterprise:** An autonomous enterprise means an enterprise that is neither a partner enterprise nor a linked enterprise within the meaning of [Article 3 of the Annex to Commission Recommendation 2003/361/EC](#). The assessment of autonomy shall take into account the ownership, control and relationship of the applicant with other enterprises, in accordance with the SME definition rules.
- **Deep tech:** refers to technology-based innovation grounded in substantial scientific or engineering advances, requiring continuous interaction with cutting-edge research, technological development and/or complex engineering challenges, and aiming to generate significant impact in its target application area. The use, integration or minor adaptation of existing or standard technologies, without advancing the underlying technology itself, shall not be considered sufficient to qualify as deep tech.
- **Early-stage startup:** means a private company that:
 - i) has been legally registered for at least six months and not more than five years at the relevant eligibility cut-off date;
 - ii) qualifies as an SME within the meaning of [Commission Recommendation 2003/361/EC](#);
 - iii) has raised less than EUR 1 million in equity; and
 - iv) is developing a technology-based innovation that has not yet reached a high-fidelity Minimum Viable Product and is positioned between Technology Readiness Level 4 and Technology Readiness Level 6, both included.
- **SME:** An SME means a micro, small or medium-sized enterprise within the meaning of [Commission Recommendation 2003/361/EC](#) of 6 May 2003 concerning the definition of micro, small and medium-sized enterprises. In accordance with Article 2 of the Annex to that Recommendation, the category of SMEs comprises enterprises which employ fewer than 250 people, and which have an annual turnover not exceeding EUR 50 million or an annual balance sheet total not exceeding EUR 43 million. **Foundations, associations, federations or other types of legal entities different from private company will not be eligible.**

- **Widening areas:** countries and territories covered by Horizon Europe’s “Widening participation and spreading excellence”, including Widening EU Member States, Associated Countries with equivalent characteristics in terms of R&I performance, and the Outermost Regions as defined in Article 349 TFEU. Eligible widening countries must be within the [22 Horizon Europe participating countries](#), dated as 12.02.2026.

For the purposes of this call, [widening areas](#) include:

Widening EU Member States: Bulgaria, Croatia, Cyprus, Czech Republic, Estonia, Greece, Hungary, Latvia, Lithuania, Malta, Poland, Portugal, Romania, Slovakia and Slovenia.

Widening Associated Countries: Albania, Armenia, Bosnia and Herzegovina, Faroe Islands, Georgia, Kosovo, Moldova, Montenegro, North Macedonia, Serbia, Tunisia, Türkiye and Ukraine.

Outermost Regions: Guadeloupe, French Guiana, Martinique, Réunion, Mayotte and Saint-Martin (France); the Azores and Madeira (Portugal); and the Canary Islands (Spain).

- **Woman:** in line with the inclusive scope of the Women TechEU programme, the term “woman” refers to a cis woman or to a transgender woman legally recognised as a woman under the applicable national legal framework. Verification may be carried out on the basis of the identity document issued by the country of nationality or other official documentation accepted under the relevant national rules.
- **Woman founder / co-founder:** means a woman who is legally recognised as a founder or co-founder of the applicant company, either as one of the original shareholders at the time of incorporation or as a shareholder whose name was added within one year from the official company registration date. The woman founder or co-founder must actively participate in the Women TechEU programme if the applicant is selected.
- **Women-led company / women leadership:** means an applicant company in which at least one woman founder or co-founder currently holds a top management position, such as Chief Executive Officer, Chief Technology Officer, Chief Scientific Officer or an equivalent executive role, and in which women hold at least 25% of the company’s shares at the time of submission. This

requirement will be assessed on the basis of the company registration documents, capitalisation table and any other supporting evidence requested during the eligibility verification process.

3. Eligibility Strand

The **application process** for Women TechEU is **divided in 2 strands**. First, applicants must verify their eligibility status, and once they are validated, they will be moved (if eligible) to the second stage, the Full Proposal stage.

This guideline covers the first stage: the eligibility check.

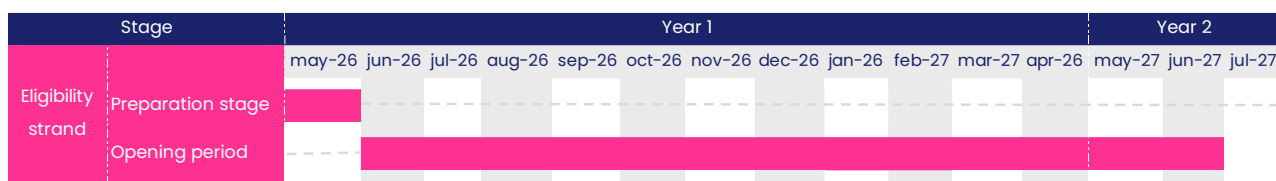


Figure 1: Calendar scheme of Eligibility Strand

3.1. Application period

- **Opening:** 1st June 2026
- **Deadline for submission*:** weekly cut-offs every Tuesday at 17:00 CE(S)T (Brussels time) until 13th July 2027 at 17:00 CEST. First cut-off is the 30th June 2026 at 17:00 CEST.

** The deadlines for cut-off submission are as stated in this Guidelines document. Please note that the platform for submission's time shown depends on the user's configured timezone and may or may not coincide with the correct time (this depends on the user, not the platform for submission). Any discrepancies in system time will not be grounds for deadline extension.*

3.2. Evaluation period

Eligibility check period: The strand is open for submission between 1st June 2026 and 13th July 2027 at 17:00 CEST. During this period, Sploro will check the submitted proposals and will verify their eligible status based on the eligibility criteria weekly (see section [Who can apply?](#)).

3.3. Eligibility Letter reception and next steps

Results: After the evaluation of the eligibility, Women TechEU will send an Eligibility Letter with the results of the eligibility check, through the Sploro Platform. Please pay attention to your email inbox for updates and notifications. This Eligibility Letter will be sent no later than one week after the cut-off the application has been submitted to.

Please note that **applicants who have submitted their eligibility form and received their eligibility letter more than 15 days before the following Full Proposal submission deadline closes, must submit their Full Proposal by the nearest submission deadline.** If you are eligible and receive the eligibility letter 14 days or less before the following Full Proposals submission deadline closes, you may submit your full proposal at the next submission deadline date.

4. Who can apply? The eligibility criteria

Women TechEU targets early-stage women-led deep tech startups. In this section, specific criteria and conditions are outlined, establishing eligibility for potential beneficiaries.

Here are the key definitions that guide the selection of beneficiaries:

- 1. The founder or co-founder** must be the **woman** and will (if selected) participate in the programme. We consider a woman co-founder if she acquired shares from the company within one year from the date of registration of the company.
- 2. Women leadership:** Women legally recognised as founders or co-founders of the company (see above). The founder or co-founder of the company must also currently hold a top management position (CEO, CTO, CSO or equivalent) within the same company. It will be also required that women hold at least **25% of the shares** in the CAP table (capitalisation table) of the company. When completing the CAP table if the founder or investor is a holding company owned by a single woman, please enter gender as woman, otherwise, select Organisation.

3. Established country: the applicant must be established in an EU Member State and their outermost regions or Horizon Europe Associated Country*.

*List of Horizon Europe Associated Countries [as published](#) by the European Commission on the submission date when the applicants submit their eligibility application.

Eligible EU countries: Austria, Belgium, Bulgaria, Croatia, Republic of Cyprus, Czech Republic, Denmark, Estonia, Finland, France, Germany, Greece, Hungary, Ireland, Italy, Latvia, Lithuania, Luxembourg, Malta, Netherlands, Poland, Portugal, Romania, Slovakia, Slovenia, Spain and Sweden.

Eligible associated countries: Albania, Armenia, Bosnia and Herzegovina, Canada, Egypt, Faroe Islands, Georgia, Iceland, Israel, Kosovo, Moldova, Montenegro, New Zealand, North Macedonia, Norway, Republic of Korea, Serbia, Switzerland, Tunisia, Türkiye, Ukraine and United Kingdom.

4. Early-stage startup:

- The legal entity must be registered for **a minimum of six months and a maximum of five years** at the time of the eligibility cut-off date they are submitting for.
- Under Horizon Europe, a 'startup' should be understood as an SME in the early stage of its life cycle, including those that are created as spin-offs from university research activities, which aims to find innovative solutions and scalable business models, and which is autonomous within the meaning of Article 3 of the Annex to [EU recommendation 2003/361](#):
 - An "**autonomous enterprise**" is any enterprise which is not classified as a partner enterprise within the meaning of paragraph 2 or as a linked enterprise within the meaning of paragraph 3
 - Employs fewer than 250 persons
 - Has an annual turnover not exceeding EUR 50 million, or an annual balance sheet total not exceeding EUR 43 million
- **Early-stage** refers to the phase of startup development generally preceding the rapid growth phase. As an indication, the following criteria will be considered, amongst other to define an early-stage startup:

-
- Startups that have been established and operating for not more than 5 years counting backwards from the eligibility cut-off date they are submitting to,
 - Startups that have raised limited funding (less than 1M € in equity), and
 - Startups are before reaching a high fidelity Minimum Viable Product, currently in a development stage between TRL4 and TRL6 (both inclusive). Check this [Self-assessment tool](#) if you're unsure of your TRL level.

5.Deep tech: Deep tech innovation aims to provide concrete solutions to our societal problems by finding its source in a deep interaction with the most recent scientific and technological advances and by seeking to produce a profound impact in the targeted application areas.

Sectors, which are most fertile for deep tech applications are:

- Advanced connectivity, navigation and digital technologies
- Advanced materials, manufacturing and recycling technologies
- Advanced sensing technologies
- AI technologies
- Biotechnologies
- Energy technologies
- Quantum technologies
- Robotics and autonomous systems
- Space and propulsion technologies.

Women TechEU welcomes applications from all deep tech fields of activity.

Using technology and being a deep tech company are **very different concepts**. A startup which is adopting industry standard technologies or modifying content, materials, integration of existing components etc, does not meet the definition of a deep tech startup.

For way of example, **the following are NOT deep tech:**

- eLearning platforms where the content is the innovative part and not the technology.

- eCommerce apps where the innovation is the business model/pricing and not the technology.
- Gaming apps which use industry standard components.
- Online information portals where the news and articles are the innovative component.

If your deep tech innovation includes AI, please note that the stage of development of your AI will be the determining factor of whether you are eligible or not for the Women TechEU programme. There are 7 stages identified as follows:

- a.** Concept development
- b.** Dataset collection
- c.** Algorithm development
- d.** AI model development
- e.** Training of AI model with dataset
- f.** Testing / piloting of trained AI model
- g.** Refinement of AI model post testing / piloting

Choosing stages (a), (b) or (c) will make your application ineligible as this would mean that you are still too early in the actual AI development.

Please refer to the following diagram for more information:

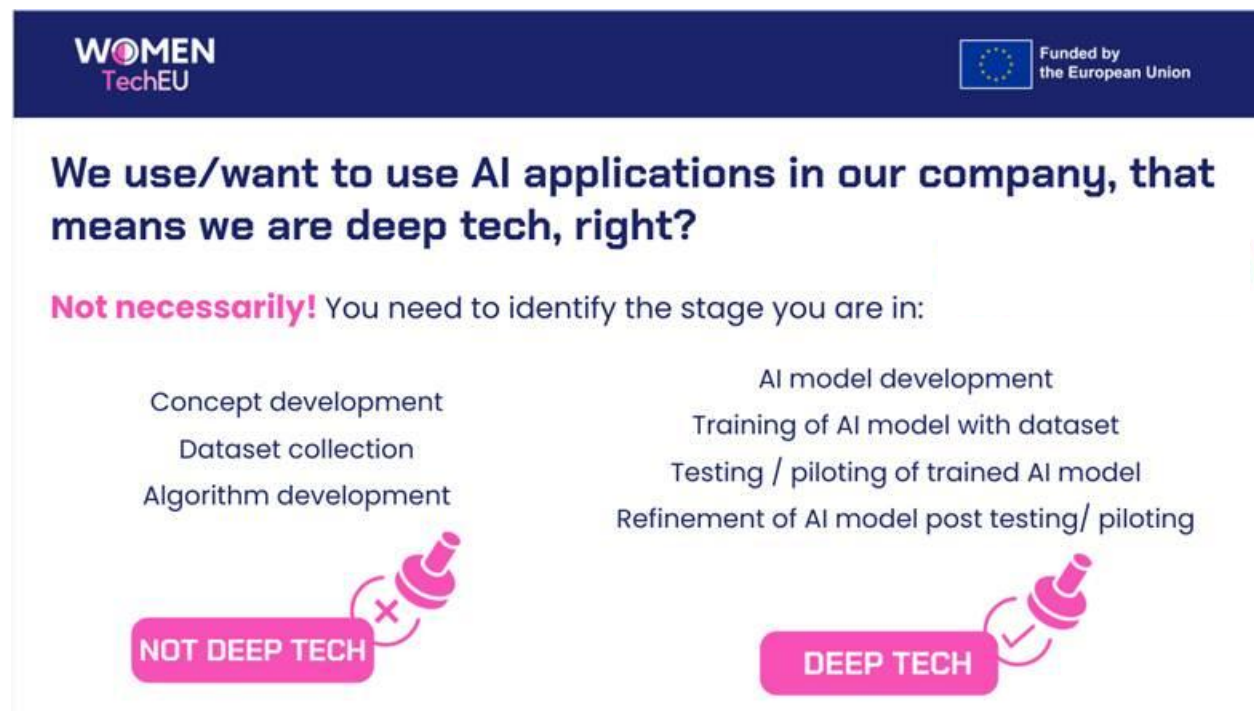


Figure 1: Development stages of AI algorithms

6. Not previously funded for the same activities by another EU Programme: To avoid double funding, neither the full application or any of its parts have benefited from previous Women TechEU initiatives or the EIC Accelerator.

7. Not part of Women TechEU 2 EIC beneficiaries: Women TechEU 2 EIC consortium partners, their affiliated entities, employees, and subcontractors are not allowed to submit a proposal and therefore to receive any financial support through the open call.

During the eligibility check, our team may reach out to you for clarifications on certain information. Please keep in mind the dates of eligibility check to be able to respond promptly, should a member from our team reach out.

5. How to apply? The Application Process

5.1. Overall process

The submission will be completed through the official online submission platform, Sploro's platform. A direct link can be found in the [Women TechEU website](#) and [here](#).

Only applications received directly through the online submission platform will be considered eligible.

Applicants will be provided with an editable template of the application form (see Annex 1) to let them prepare the eligibility application offline before introducing the information in the form available in the Sploro platform. Applications can be edited and saved on the platform as many times as needed. Applicants do not need to complete and submit their application in one go. **Sending this form template in any other format, via e-mail or any other means will automatically disqualify the submission.**

Applicants must strictly adhere to the form provided by Women TechEU consortium via the [Sploro platform](#), which defines sections and the overall length. Evaluators will be instructed not to consider extra material in the evaluation. Please do not upload any document into the documents section of your application prior or after closing deadline. They will not be taken into consideration for evaluation. Women TechEU team will contact you in case any document is additionally required.

Applicants are required to ensure that all information provided in their application is accurate and truthful. Should any false information be discovered, submitted with the intent of passing the eligibility criteria, the applicant will be automatically disqualified from the current and all future cut-offs and submission deadlines in the Women TechEU 2 EIC project.

First stage is **Eligibility check**, designed to verify that applicants meet the participation requirements. **The application form will immediately advise the applicant on their eligibility.**

After a thorough check, within a week after the cut-off date in which they have submitted their application, applicants will receive a letter of non-eligibility or invitation to submit Full Proposal to the following submission deadline date.

In case the proposal is marked as non-eligible, the applicant has the right to re-apply should their eligibility status change. The **maximum number of resubmissions for the Eligibility check is three (3) times.** Considering that eligibility may vary over time, three resubmissions are considered sufficient to ensure fair and transparent treatment.

The non-eligible applicants will have the right to appeal the decision, following the Appeals Procedure (see section **Error! Reference source not found.**).

5.2. Language

English is the official language for the entire Women TechEU open calls process. Submissions done fully or in part in any language other than English will not be considered.

The same applies for the implementation of the Women TechEU programme. This means that any requested submission of documentation and deliverables will be completed in English to be eligible, and the programme activities will be only held in English.

5.3. Application preparation

For the successful submission, applicants are strongly advised to follow these steps:

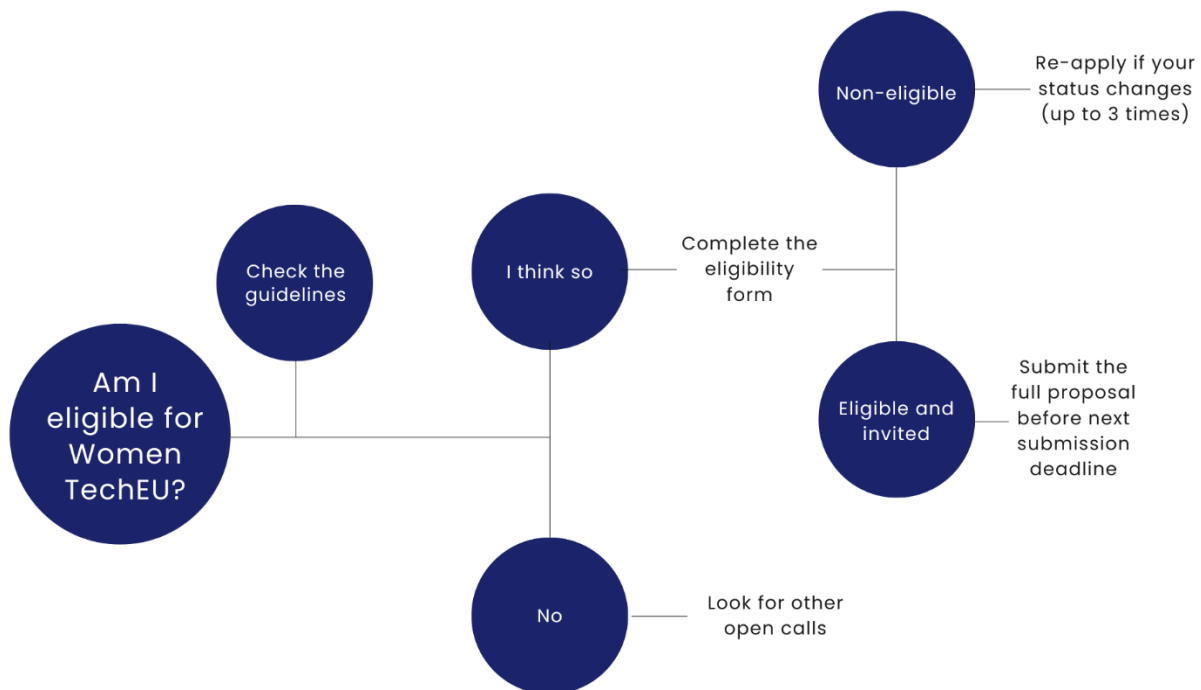


Figure 2. Decision tree for submission

1. **Check the guidelines** for applicants to determine if your organisation is eligible for the programme.
2. Be **concrete and concise**. Open questions have character limitations.
3. Please examine all the open call documents and **attend at least one of the online events** promoted by the Women TechEU project to be fully prepared. Please, mark your calendars for the upcoming InfoDays:
 - a. **1st InfoDay:** 25 June 2026 at 10:00h CEST (Brussels time)
 - b. **2nd InfoDay:** 08 July 2026 at 10:00h CEST (Brussels time)
 - c. **3rd InfoDay:** 06 August 2026 at 12:00h CEST (Brussels time)
 - d. **4th InfoDay:** 15 September 2026 at 16:00h CET (Brussels time)
 - e. **5th InfoDay:** 10 November 2026 at 16:00h CET (Brussels time)
 - f. **6th InfoDay:** 12 January 2027 at 10:00h CET (Brussels time)
 - g. **7th InfoDay:** 16 March 2027 at 16:00h CEST (Brussels time)
 - h. **8th InfoDay:** 04 May 2027 at 10:00h CEST (Brussels time)

* Recordings from the InfoDays will be available after the session on the project social media and website. Information on how to apply and where to find results will be explained during the InfoDays.

4. Only submissions within the Open Call duration will be accepted. There will not be any deadline extensions unless there is a Force Majeure situation i.e., a major problem with the platform caused by the Women TechEU 2 EIC consortium and not by the applicants, making the system unavailable for a long period. It is strongly advised not to wait until the last cut-off to submit.
5. Submit your proposal at least two days before the cut-off, to avoid any technical issues that can occur when there is a very high volume of activity on the online platform.

6. Verification process

6.1. Eligibility criteria

An automatic filtering to discard non-eligible proposals will follow the shortlist below. **Eligibility criteria** check will verify:

-
- a) All the required fields in the online application form are properly completed and in English.
 - b) The existence of a legal entity.
 - c) Registration of the organisation at least six months by the time of the eligibility cut-off date they are submitting to.
 - d) Registration date of the organisation within 5 years at the time of the eligibility cut-off date they are submitting to.
 - e) The organisation is legally registered in one of the eligible countries list.
 - f) Organisation classification as an early-stage SME:
 - i. A SME will be considered as such if complying with the [European Commission Recommendation 2003/361/EC](#) and, the SME user guide. In a summary, the criteria which define an SME are:
 - a. Autonomous enterprise within the meaning of Article 3 of the Annex to the Commission Recommendation 2003/361/EC.
 - b. Headcount in Annual Work Unit (AWU) less than 250.
 - c. Annual turnover less or equal to 50 million € OR annual balance sheet total less or equal to 43 million €.
 - ii. The organisation has raised less than 1M € in equity.
 - iii. The organisation has not reached a high fidelity Minimum Viable Product (solution between TRL4 and TRL6, both included).
 - g) The organisation is a 'deep tech' company which has started development
 - a. In the case of AI, it is at an advanced stage of actual AI development.
 - h) The startup is founded or co-founded by women
 - i) The co-founder is holding a top management position (CEO, CTO, CSO or equivalent) in the company at the time of submission
 - j) Women own at least 25% of the shares in the company at the moment of submission
 - k) The uniqueness of the proposal: the proposal is not already funded in the previous Women TechEU initiatives or EIC Accelerator.
 - l) None of the co-founders or employees of the organisation are currently working for any of the Women TechEU 2 EIC project beneficiaries.

7. Appeals procedure

The Women TechEU 2 EIC consortium has established a process that allows applicants to appeal the decision in the event their proposal is considered not eligible.

The Women TechEU 2 EIC consortium undertakes to send the eligibility results (Eligibility Letter) within one week of the cut-off date. After notification of results, if the applicant believes that the results of the eligibility checks are incorrect and have failed to comply with the rules of this strand as stated in this document, that may affect the final decision on whether to move to the Full Proposal call or not, the following appeal procedure is available:

Complaints, which should include a detailed explanation and clear evidence of the alleged error, should be made **within seven (calendar) days** from the communication of results to the applicants via the appeals online form whose link will be made available to them at the moment of communicating the results.

The Women TechEU 2 EIC Team will thoroughly investigate complaints to determine if a re-evaluation of the proposal is justified. A decision will be communicated within not more than **twenty days from the date of receiving the complaint**, provided that all required information has been submitted by the complainant. If this timeline cannot be met, the complainant will be informed by email of the delay and given a new decision date.

In instances where re-evaluation is deemed necessary and the result of this is positive, the applicant will be invited to submit their application to the Full Proposal call.

To maintain the efficiency of the process, **each proposal is allowed a single appeal**. The decision reached at the end of the appeal process is final, concluding any further discussion regarding the proposal's evaluation. No exceptions to any of the rules explained in these guidelines can or will be made by the Women TechEU 2 EIC consortium. Any inappropriate attempts to influence the process, including but not limited to repeated requests for exceptions, unsolicited contact with consortium members or associated partners, or officers will be considered unprofessional conduct.

Repeated or deliberate attempts to seek exceptions to the rules, as well as any effort to exert undue pressure on the Helpdesk, are strictly prohibited. Such behaviour will be formally recorded and may result in the rejection of current or future applications, as it constitutes harassment and unprofessional conduct in accordance with section 8.1 Questions during submission process.

8. Helpdesk support channel

8.1. Questions during submission process

Women TechEU 2 EIC offers a dedicated **support channel** available for applicants at helpdesk@womentecheuropa.eu. However, the Helpdesk team should not be your first resource for information. Applicants are requested to consult these Guidelines, the FAQs, and recorded information sessions before resorting to the Helpdesk.

Note that the Helpdesk team will not pre-evaluate proposals or give an opinion on the validity and/or eligibility of individual organisations and their projects. The submitted applications are evaluated on a weekly basis and the results will be sent at least one week after the cut-off closes.

The Helpdesk is the only official channel of communication for applicants. Any email or communication received outside of the designated support channel will not be taken into account. This includes, but is not limited to: emails, calls, and messages to individuals within the Women TechEU 2 EIC consortium on their personal or professional accounts; messages sent on social media to the Women TechEU pages; messages sent to the social media accounts of individuals or organisations within the Women TechEU 2 EIC consortium, messages to EISMEA and its staff or messages sent via the Sploro platform.

Harassment and unprofessional conduct when communicating with the Helpdesk will not be tolerated. Individuals conducting themselves in such a manner will be warned. Should such behaviour continue, **any application submitted by that applicant may be automatically disqualified**. Examples of such conduct include, but are not limited to, repeated demands for information that the Helpdesk is not at liberty to provide, attempting to sway the Helpdesk team or put pressure in favour of your application, asking or demanding for an exception from the rules to be applied to you, using

profanity, and personally harassing individuals within the Women TechEU 2 EIC consortium through their personal contact channels (email, phone, social media etc).

Requests to the Helpdesk will normally receive a response within 2 working days (Monday-Friday 09:00-17:00 CE(S)T). While all possible effort will be made to respond in a timely manner, the applicants should plan their submission, accordingly, allowing enough time before the deadline (i.e., at least 2 working days) if they expect an answer.

The Helpdesk reserves the right to extend its period of reply from 2 working days to 4 working days during times of high communication volume, such as in the days leading up to and after a cut-off deadline. In such cases, the Helpdesk team will apply an automatic notification system informing people of these circumstances.

Requests or inquiries received AFTER two days before the cut-off date of the call will neither be considered nor answered. Lack of receipt of an answer to an inquiry shall not constitute grounds for an extension, appeal or re-evaluation of a proposal.

8.2. Technical issues

Applicants should be aware that it is best practice to submit at least two days before the cut-off deadline to avoid any technical issues that can occur when there is a very high volume of activity on the online platform.

If you do experience technical issues preventing your submission in some way, this must be reported to the Helpdesk team **BEFORE** the official deadline. Anything received AFTER the deadline, even if just a minute later, will not be considered nor investigated.

In the event that you encounter technical issues, please contact the Helpdesk clearly explaining what you are experiencing, including any error messages or unexpected behaviour. Specify the steps leading up to the problem, so that we can replicate it. Include a timestamp screenshot of your entire screen or the specific part where the issue is visible. Ensure that the screenshot includes the system clock or another form of a timestamp. If applicable, provide any other relevant details such as the device, operating system, and browser you are using.

Even if you have a timestamped screenshot showing the error taking place beforehand, if the message with the screenshot does NOT reach the Helpdesk before the deadline, it will not be considered nor investigated. The time log of when the initial

report reaches the Helpdesk email is the only factor that will be considered. If an applicant provides a screenshot showing that, at their end, an email was sent before the deadline, but this time does not match with the time log at the end of Helpdesk, it is always the Helpdesk's time log that will be considered.

Do not wait until the last moment to report technical issues to our Helpdesk. We recommend that you attempt to submit your work at least 48 hours before the official cut-off deadline to avoid any unforeseen problems.

Any communication stating technical issues received after the cut-off deadline will not be considered nor taken into account.

8.3. Re-submission of submitted applications

The cut-off deadline is final. No exceptions of any kind will be made, regardless of any personal circumstances that may have affected you on the day of the deadline. The Women TechEU 2 EIC team and the Helpdesk will not re-open or amend your application, nor consider any extra information or documentation sent to it after the deadline.

The application form informs you in real-time before submission if your company is eligible or not for Women TechEU programme. It is thus advisable to review the input data before submitting the form. If an applicant discovers an error in a submitted application, the applicant must submit a new application to the next cut-off date.

Note that each applicant has a maximum of 3 re-submissions in the Eligibility Strand.

Results are sent on a weekly basis. Therefore, it is not permitted to modify the data of a proposal that has been already submitted; instead, a new proposal must be submitted with the updated data.

9. Beneficiaries' Responsibilities

The applicants are responsible to ensure that they comply with the obligations under Horizon Europe's specific requirements. The obligations that are applicable to the recipients of funding include:

9.1. Absence of conflict of interest

Applicants must not have any actual or potential conflicts of interest during the Women TechEU selection process or the entire project duration (2026–2028). Any situations that could potentially influence the impartiality of the individuals taking part in the selection process, or during the project implementation, are considered conflicts of interest. These can include financial interests, personal relationships, or any other factors that could affect the applicant's ability to remain impartial. All cases of conflict of interest will be assessed on a case-by-case basis by the relevant Women TechEU selection committee and consortium partners. **If an applicant is found to have a conflict of interest, this could result in their application being disqualified.**

It is important to note that **Women TechEU 2 EIC consortium partners, their affiliated entities, employees, and subcontractors are not allowed to submit a proposal and therefore to receive any financial support through the open call**, as this would violate the European Commission's regulations.

Beneficiaries must take all measures to prevent any situation where the impartial and objective implementation of the sub-grantee project is compromised for reasons involving economic interest, political or national affinity, family or emotional ties or any other shared interest ('conflict of interests'). They must formally notify to the Women TechEU 2 EIC coordinator without delay of any situation constituting or likely to lead to a conflict of interest and immediately take all the necessary steps to rectify this situation. The Women TechEU 2 EIC coordinator may verify that the measures taken are appropriate and may require additional measures to be taken by a specified deadline.

9.2. Data protection and confidentiality

Women TechEU 2 EIC requires access to Personal and Entity Data in order to process and evaluate applications. As the open call coordinator, Sploro will act as the Data Controller for all data submitted through the Sploro platform for this purpose. To ensure the safety and security of this data, the Sploro platform has been designed and operates under strict compliance with [The General Data Protection Regulation \(EU\) 2016/679 \(GDPR\)](#). Therefore, all applicants are required to accept the Sploro Platform

terms to ensure full coverage. For more information regarding the data privacy policy and security measures implemented by Sploro, please refer to their website at <https://sploro.eu>.

Essential data may be shared with consortium partners and project associates, ensuring confidentiality and integrity, solely for the purpose of fulfilling the evaluation of the proposal and the Women TechEU Programme of Services.

During implementation of the sub-grantee project and for five years after the end of the sub-grantee project, the parties must keep confidential any data, documents or other material (in any form) that is identified as confidential at sub-grantee signing time ('confidential information').

In Women TechEU 2 EIC, we are committed to protecting your privacy and secure your personal data. This article explains how we handle your personal data in accordance with the applicable national and European data protection legislation, including [Regulation \(EU\) 2016/679](#) of the European Parliament and of the Council of 27 April 2016 on the protection of natural persons with regards to the processing of personal data and on the free movement of such data, and repealing [Directive 95/46/EC \(GDPR\)](#).

As we determine the purpose and means of processing your personal data in the context of the submission of proposals for this Open Call, which is part of the Women TechEU 2 EIC activities, Sploro is considered to be the Data Controller with regards to the processing of your personal data.

SPLOROTECH SL, address: PARQUE TOMÁS CABALLERO 2, Sexto, Oficina 1,

Despacho 6.10, Pamplona, Spain (hereinafter Sploro)

E-mail: lopd@sploro.eu

In the context of conducting this Open Call, which is part of the project Women TechEU 2 EIC, we collect your personal data necessary for evaluating your proposal. These data may include but is not limited to:

- Name, contact information, and professional details (provided via form, CV standalone files or any other type of data)
- Information included in your application forms, supporting documents, or other materials.

This data will be used for purposes such as evaluating submissions, managing participation in the programme, and complying with our contractual obligations under the grant agreements of the programme that you are applying for.

Your personal data may be shared with third parties which may, include, but are not limited to:

- **Granting Authorities:** EISMEA.
- **Consortium Partners:** The information provided may also be shared with the partners in the consortium. These partners are contractually obligated to handle your data in compliance with applicable with national and European data protection legislation, including GDPR standards, ensuring the confidentiality and security of your personal data. More information about the project consortium members can be found at the project website www.womentecheuropa.eu.
- **Subcontractors or evaluators** involved in assessing applications or implementing actions.
- **Monitoring and oversight bodies**, including internal audits, the European Court of Auditors, and the European Anti-Fraud Office (OLAF), as required under Union or national laws.

Such sharing will be conducted in compliance with GDPR, the grant agreements, and other relevant regulations. In particular:

- For EC co-funded programmes, personal data included in applications will be shared with the EC or its agencies, as required by Articles 15, 19, and 25 of the [Horizon Europe Grant Agreement](#).
- EISMEA may process this data as data controllers to monitor compliance, ensure proper implementation, and verify eligibility.

Accuracy and Completeness of Data

All data provided must be accurate, precise, and complete, as required by **Article 19.1 of the Horizon Europe Grant Agreement**. Failure to provide such data may result in the inability to process your application or other actions necessary for programme participation.

Security Measures

Sploro implements appropriate technical and organisational measures to ensure the security of your personal data.

All data processing activities are carried out in a strictly confidential manner and secured according to the current state of the art and using industry's best practices including anonymisation techniques where possible.

The processing of your personal data is carried out strictly in accordance with the principles of data protection as laid down in the GDPR Directive. All data processing activities are carried out lawfully by ensuring that the legal grounds for the processing thereof is given.

As the processing of your personal data is based on your consent, you have the right to withdraw your consent at any time by contacting us at lopd@sploro.eu. Please note, however, that once you have withdrawn your consent, we will no longer be able to process your data and will not be able to continue with the evaluation of your proposal.

We will only process your data for the purposes explained in this article and will only retain data for as long as necessary to fulfil the purposes explained. After that, your data will be securely deleted or anonymised. We emphasise that we take appropriate technical and organisational measures to protect your data from unauthorised access, disclosure, or misuse, in accordance with the requirements of relevant regulations.

Under the GDPR Directive, you have the following rights concerning your personal data:

- Right of Access
- Right to Rectification
- Right to Erasure
- Right to Restrict Processing
- Right to Data Portability
- Right to Object

To exercise data protection rights or if you have any questions regarding your personal data, please contact us at lopd@sploro.eu.